



Viewings by appointment
0207 483 2611

abbey
properties

St. Johns Wood Park, NW8 6NG

£5,416 *fees apply



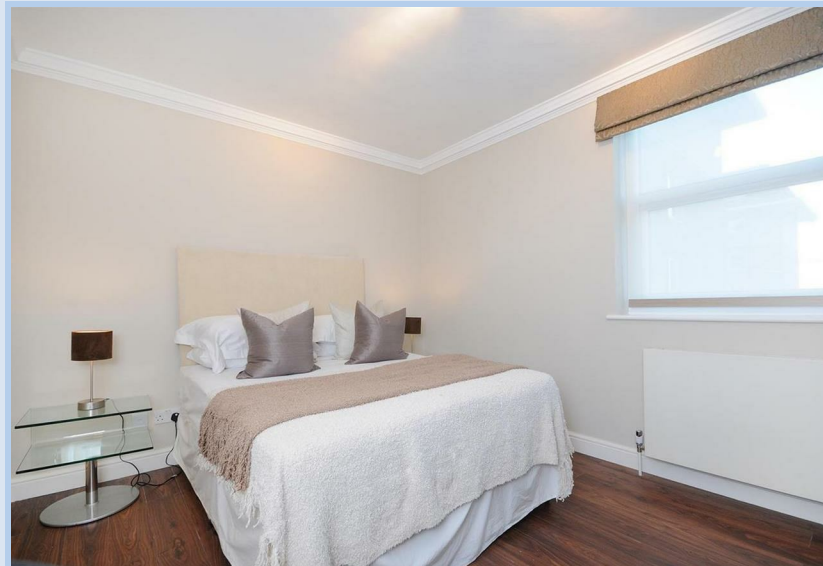
Bespoke interior designed three bedroom, two bathroom (1093sqft/101.5sqm) apartment on the seventh floor (with lift) of a recently refurbished mansion block with 24h portage in St John's Wood. The apartment is sophisticated in interior design creating a lifestyle that is both contemporary yet relaxing, comprising German designed kitchen with Italian stone worktops and fully integrated high quality Bosch appliances, air-conditioned reception and dining room. Master bedroom with fitted wardrobes and an en-suite bathroom.

Boydell Court is located moments from the entertainment and shopping facilities of St John's Wood and the green open spaces of Primrose Hill.

Nearest tube station is Swiss Cottage (Jubilee line) providing reliable links to the City and West End.

Our agency are members of Property Mark, Client Money Protection and we hold an account with the Deposit Protection Scheme (ID number 1 8 7 0 9 7 4). Our trading name & registered office address is Wellington Estates Property Ltd, WorkLife, 174 Hammersmith Rd, London, W6 7JP company registration number 0 9 7 7 8 0 1 9 7. We charge no administration fees to tenants.

Tax Band: F
EPC Rating: C



abbey
properties

